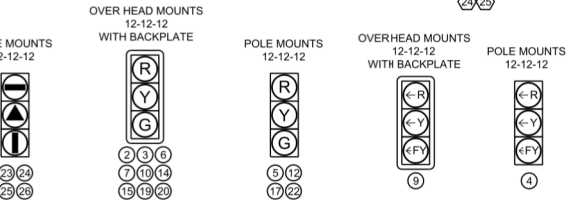
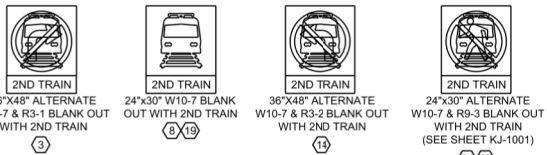
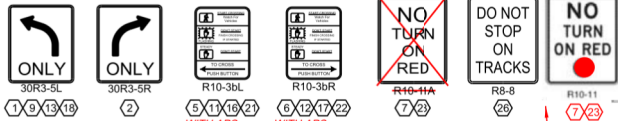
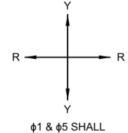


**NOTES:**

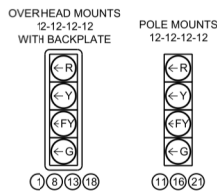
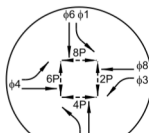
- PROPOSED TRAFFIC SIGNALS TO BE CONSTRUCTED WITH HEADS AND SIGNS CRANGE BAGGED PRIOR TO REMOVAL OF EXISTING EQUIPMENT. NORTHBOUND, WESTBOUND AND EASTBOUND MAST ARMS TO BE MOUNTED ONLY AT REMOVAL OF EXISTING ARMS DURING TEMPORARY ROAD CLOSURE. SEE MOT PLANS (KP-2000 SERIES) FOR DETAILS.
- SIGNAL HEAD 23 AND SIGNS 24 & 25 TO BE INSTALLED PER KJ-1001. SIGNAL HEADS 24 AND 25 TO BE BREAKAWAY PEDESTAL POLE MOUNTED PER COA STANDARDS TE-3 AND TE-9 (MEDIAN). SIGNAL HEAD 26 TO BE OCS POLE MOUNTED.
- RESET WIRELESS NETWORK EQUIPMENT AND PRESERVE ORIGINAL ALIGNMENT.
- CONTRACTOR TO FURNISH AND INSTALL ILLUMINATED STREET NAME SIGNS WITH INDUCTION LIGHT SOURCE PER CITY STANDARDS.
- SIGNAL FOUNDATIONS, BORING AND POTHOLING FOR SIGNAL WORK CAN BE PERFORMED DURING ANY PHASE UNLESS OTHERWISE SPECIFIED IN THE TRAFFIC CONTROL PLANS. CONDUIT TO BE PLACED BY DIRECT BORE METHOD UNDER EXISTING ROADWAY.
- 2" PVC CONDUIT TO BE ROUTED THROUGH XCEL PULL BOXES FOR LUMINAIRES.
- SIGNAL POLE AND CABINET LOCATIONS TO BE FIELD VERIFIED BY CITY TRAFFIC ENGINEER OR DESIGNEE.
- SEE SHEET KJ-1002 FOR ADDITIONAL LOOP DETECTOR DETAILS. EXACT DETECTOR LOCATIONS TO BE CONFIRMED AT INSTALL AND COORDINATED WITH SYSTEMS. SEE JE-600 SERIES SHEETS. LOOPS SHALL BE PROTECTED IN-PLAGE - MEANS AND MATERIAL TO BE APPROVED BY RTD. PLACED IN CORRUGATED SPLIT CONDUIT FOR PROTECTION (PER NDC 157).
- FINAL TRAFFIC SIGNAL PHASING PLAN SUBJECT TO PUC APPROVAL.



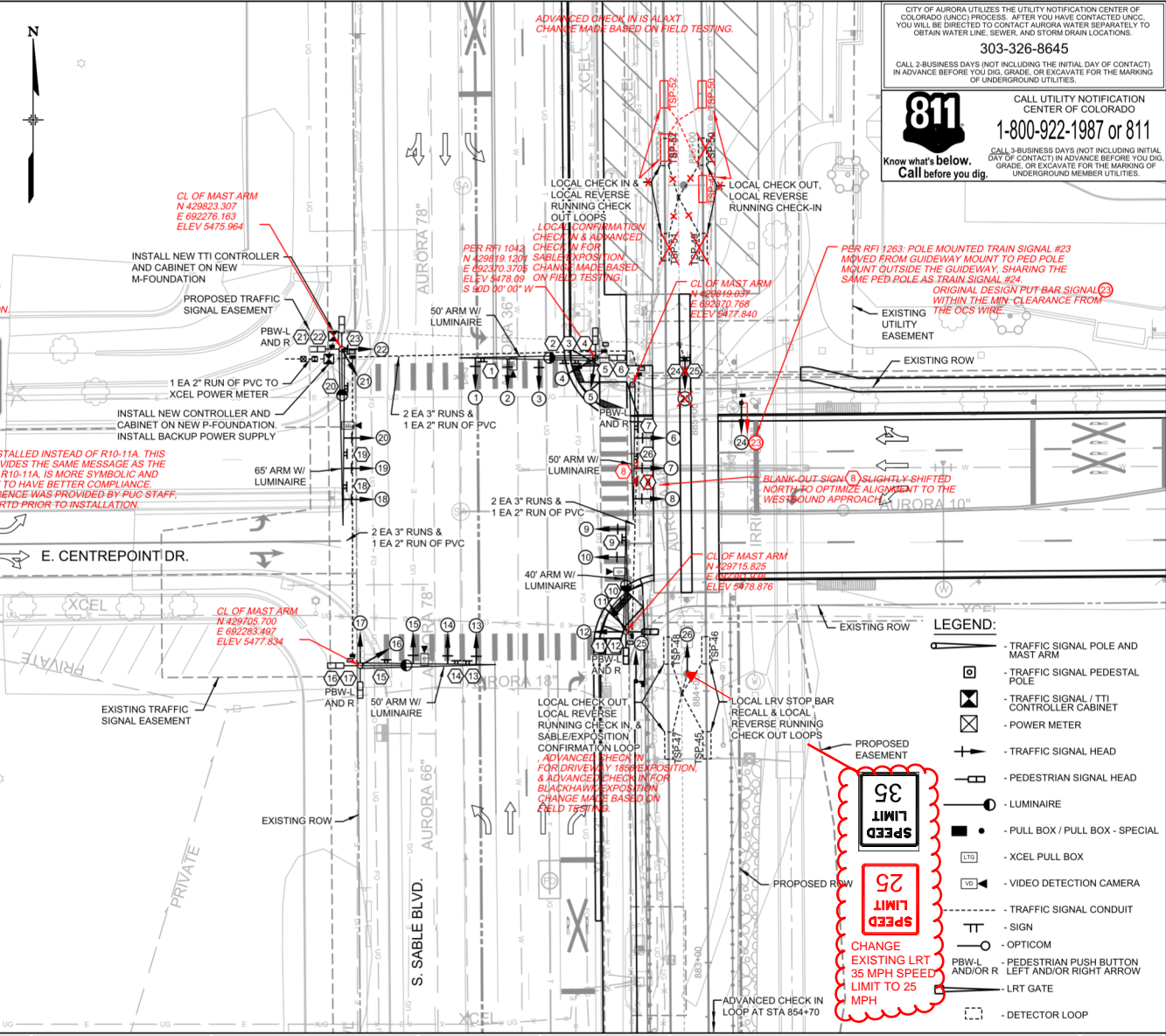
**FLASH OPERATION**



**SIGNAL PHASING**



LRT SIGNALS GO DARK (PER NDC 157)



CITY OF AURORA UTILIZES THE UTILITY NOTIFICATION CENTER OF COLORADO (UNCC) PROCESS. AFTER YOU HAVE CONTACTED UNCC, YOU WILL BE DIRECTED TO CONTACT AURORA WATER SEPARATELY TO OBTAIN WATER LINE, SEWER, AND STORM DRAIN LOCATIONS.

**303-326-8645**

CALL 2-BUSINESS DAYS (NOT INCLUDING THE INITIAL DAY OF CONTACT) IN ADVANCE BEFORE YOU DIG, GRADE, OR EXCAVATE FOR THE MARKING OF UNDERGROUND UTILITIES.

**811** CALL UTILITY NOTIFICATION CENTER OF COLORADO

**1-800-922-1987 or 811**

CALL 3-BUSINESS DAYS (NOT INCLUDING THE INITIAL DAY OF CONTACT) IN ADVANCE BEFORE YOU DIG, GRADE, OR EXCAVATE FOR THE MARKING OF UNDERGROUND MEMBER UTILITIES.

Know what's below. Call before you dig.

**LEGEND:**

- TRAFFIC SIGNAL POLE AND MAST ARM
- TRAFFIC SIGNAL PEDESTAL POLE
- TRAFFIC SIGNAL / TTI CONTROLLER CABINET
- POWER METER
- TRAFFIC SIGNAL HEAD
- PEDESTRIAN SIGNAL HEAD
- LUMINAIRE
- PULL BOX / PULL BOX - SPECIAL
- XCEL PULL BOX
- VIDEO DETECTION CAMERA
- TRAFFIC SIGNAL CONDUIT
- SIGN
- OPTICOM
- PEDESTRIAN PUSH BUTTON LEFT AND/OR RIGHT ARROW
- LRT GATE
- DETECTOR LOOP

**35**  
SPEED LIMIT

**25**  
SPEED LIMIT

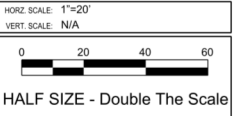
CHANGE EXISTING LRT 35 MPH SPEED LIMIT TO 25 MPH

0	RFC CIVIL/TRACK B2	DEH	23-May-14
1	RFC NDC #157	MDH	12-Feb-16

DESIGNED BY: MDH	DATE: 11/25/16	CHECKED BY: GRB	DATE: 02/09/16
DRAWN BY: MDH	DATE: 11/25/16	APPROVED BY: MDH	DATE: 02/12/16

TRANSPORTATION **AECOM**

AECOM TECHNICAL SERVICES, Inc.  
717 Severdorth Street, Suite 2500  
Denver, CO 80202  
T 303.228.3000 F 303.228.3001 www.aecom.com



**AS-BUILT DRAWING**

**RTD FasTracks**  
I-225 Rail Line

1560 BROADWAY, SUITE 700  
DENVER, COLORADO 80202  
(303) 299-6990

**I-225 RAIL LINE**  
**REGIONAL TRANSPORTATION DISTRICT**

**TRAFFIC CONTROL SIGNAL PLAN**  
**E. CENTREPOINT DR. AND S. SABLE BLVD.**

SHEET REFERENCE NUMBER:  
**KJ-4008**