

CITY OF AURORA UTILIZES THE UTILITY NOTIFICATION CENTER OF COLORADO (UNCC) PROCESS. AFTER YOU HAVE CONTACTED UNCC, YOU WILL BE DIRECTED TO CONTACT AURORA WATER SEPARATELY TO OBTAIN WATER LINE, SEWER, AND STORM DRAIN LOCATIONS.

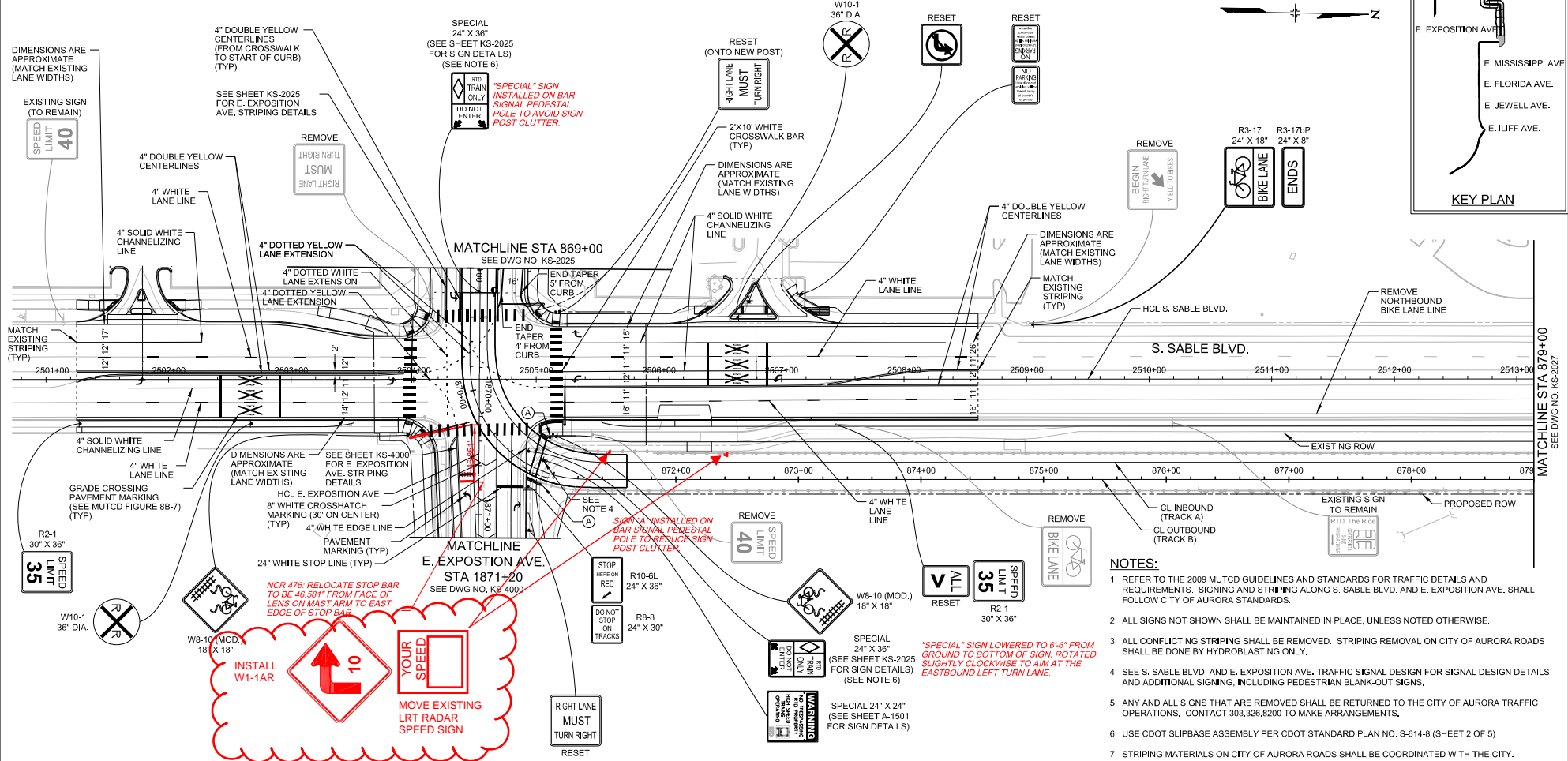
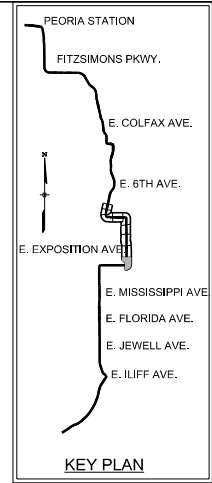
303-326-8645

CALL 2-BUSINESS DAYS (NOT INCLUDING THE INITIAL DAY OF CONTACT) IN ADVANCE BEFORE YOU DIG, GRADE, OR EXCAVATE FOR THE MARKING OF UNDERGROUND UTILITIES.

811 CALL UTILITY NOTIFICATION CENTER OF COLORADO
1-800-922-1987 or 811

CALL 3-BUSINESS DAYS (NOT INCLUDING INITIAL DAY OF CONTACT) IN ADVANCE BEFORE YOU DIG, GRADE, OR EXCAVATE FOR THE MARKING OF UNDERGROUND MEMBER UTILITIES.

Know what's below. Call before you dig.

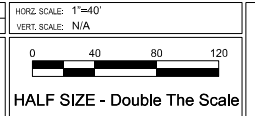


- NOTES:**
- REFER TO THE 2009 MUTCD GUIDELINES AND STANDARDS FOR TRAFFIC DETAILS AND REQUIREMENTS. SIGNING AND STRIPING ALONG S. SABLE BLVD. AND E. EXPOSITION AVE. SHALL FOLLOW CITY OF AURORA STANDARDS.
 - ALL SIGNS NOT SHOWN SHALL BE MAINTAINED IN PLACE, UNLESS NOTED OTHERWISE.
 - ALL CONFLICTING STRIPING SHALL BE REMOVED. STRIPING REMOVAL ON CITY OF AURORA ROADS SHALL BE DONE BY HYDROBLASTING ONLY.
 - SEE S. SABLE BLVD. AND E. EXPOSITION AVE. TRAFFIC SIGNAL DESIGN FOR SIGNAL DESIGN DETAILS AND ADDITIONAL SIGNING, INCLUDING PEDESTRIAN BLANK-OUT SIGNS.
 - ANY AND ALL SIGNS THAT ARE REMOVED SHALL BE RETURNED TO THE CITY OF AURORA TRAFFIC OPERATIONS. CONTACT 303.326.8200 TO MAKE ARRANGEMENTS.
 - USE CDOT SLIPBASE ASSEMBLY PER CDOT STANDARD PLAN NO. S-614-8 (SHEET 2 OF 5)
 - STRIPING MATERIALS ON CITY OF AURORA ROADS SHALL BE COORDINATED WITH THE CITY.

0	RFC CIVIL/TRACK B2	TJH	23-May-14	DESIGNED BY: MDH	DATE: 03/23/15	CHECKED BY: GRB	DATE: 03/24/15	HORIZ. SCALE: 1"=40'
1	RFC NDC #69	MDH	27-Mar-15	DRAWN BY: MDH	DATE: 03/23/15	APPROVED BY: MDH	DATE: 03/27/15	VERT. SCALE: N/A

TRANSPORTATION **AECOM**

AECOM TECHNICAL SERVICES, Inc.
1715 SpeerBoulevard Street, Suite 2000
Denver, CO 80202
T 303.295.3000 F 303.223.3001 www.aecom.com



AS-BUILT DRAWING

RTD FasTracks
I-225 Rail Line

I-225 RAIL LINE
REGIONAL TRANSPORTATION DISTRICT

TRAFFIC CONTROL
SIGNING AND STRIPING PLAN
STA 869+00 TO STA 879+00

SHEET REFERENCE NUMBER:
KS-2026